

Snow Much Fun

by Shelly Comiskey

Simply Shelly
design and illustration



A Free Project Sheet From

 **Henry Glass & Co., Inc.**



Finished Panel Quilt Size: 43" x 61"
Finished Pieced Quilt Size: 79" x 98½"

49 West 37th Street, New York, NY 10018
tel: 212-686-5194 fax: 212-532-3525
Toll Free: 800-294-9495

www.henryglassfabrics.com



Snow Much Fun

Quilts Designed by: Cate Tallman-Evans

Finished Panel Quilt Size: 43" x 61"

Finished Pieced Quilt Size: 79" x 98½"

Finished Block Size: 18" x 18"

Fabrics in the Collection



F5897-11
Printed Panel



F5898-11
Blue Snowmen



F5898-44
Cream Snowmen



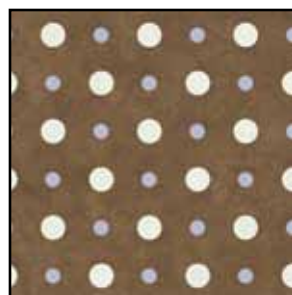
F5899-11
Blue Tonal



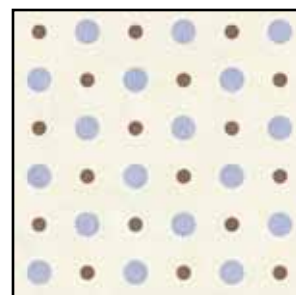
F5899-44
Tan Tonal



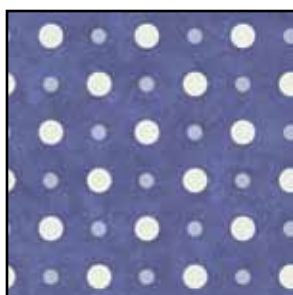
F5899-66
Green Tonal



F5900-33
Brown Dot



F5900-44
Cream Dot



F5900-77
Blue Dot



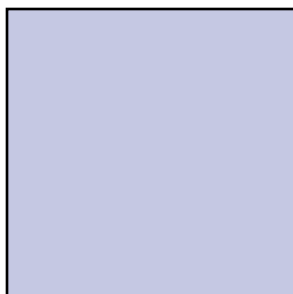
F5901-11
Blue Snowflakes



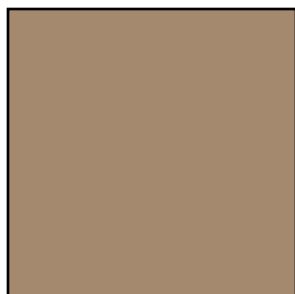
F5901-33
Brown Snowflakes



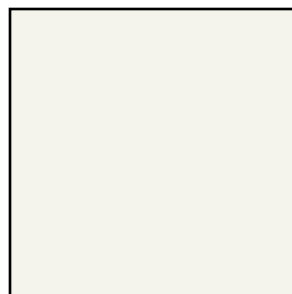
F5902-11
Snowman Scenes



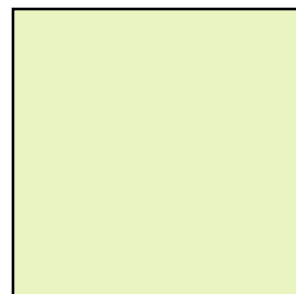
Fluffy Solid
Periwinkle



Fluffy Solid
Mocha



Fluffy Solid
Off-white



Fluffy Solid
Green

Snow Much Fun

Panel Quilt

Materials

2/3 yard	Printed Panel	F5897-11
7/8 yard	Cream Snowmen	F5898-44
1/4 yard	Blue Tonal	F5899-11
1/4 yard	Green Tonal	F5899-66
3/4 yard	Blue Dot	F5900-77
3/4 yard	Brown Snowflakes	F5901-33
	<i>(includes binding)</i>	
3 yards	Cream Snowmen	F5898-44
	<i>(for quilt backing)</i>	

Cutting Instructions

Please note: all strips are cut across the width of the fabric from selvage edge to selvage edge.

From the printed panel cut:

- (1) 23½" wide x 41½" long piece with the printed motifs centered in the cut piece.

From the cream snowmen, cut:

- (4) 6½" strips for the middle border.

From the blue tonal, cut:

- (1) 3" strip. Recut into (4) 3" x 3" and (4) 2" x 2" squares.

From the green tonal, cut:

- (1) 2½" strip. Recut into (16) 2½" x 2½" squares.

From the blue dot, cut:

- (5) 3" strips for the outer border.
- (4) 2" strips for the inner border.

From the brown snowflakes, cut:

- (8) 2½" strips. Set aside (6) strips for the binding. Recut (2) strips into (20) 2½" x 2½" squares.

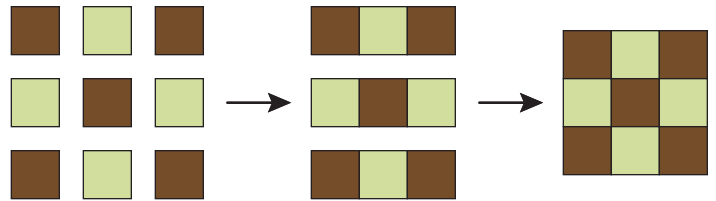
Sewing Instructions

All seams are sewn using 1/4" seam allowance with pieces held right sides together and raw edges even.

1. Trim (2) 2" blue dot strips to 41½". Stitch the trimmed strips to the left and right sides of the printed panel piece.
2. Trim (2) 2" blue dot strips to 23½". Stitch 2" blue tonal squares to both ends of both trimmed strips. Stitch these border units to the top and bottom of the printed panel.

Sewing Instructions (cont.)

3. Trim the selvages from the 6½" cream snowmen strips. Sew the strips together end to end to make a long 6½" strip. From this long strip, cut (2) 44½" and (2) 26½" lengths (*if your measurements are different, cut to fit your quilt top*). Stitch the longer lengths to the left and right sides of the quilt top.
4. Arrange (5) 2½" brown snowflakes squares and (4) 2½" green tonal squares into (3) rows with (3) squares in each row, alternating the two types of squares. Stitch the squares into rows and sew the rows together to complete (1) 6½" x 6½" nine-patch block.



Repeat to make a total of (4) nine-patch blocks.

5. Stitch a nine-patch block from step 4 to each end of the (2) shorter 6½" cream snowmen strips cut in step 3. Sew these pieced borders to the top and bottom of the quilt top.
6. Trim the selvages from the (5) 3" blue dot strips and sew the strips together end to end to make a long 3" strip. From this long strip cut (2) 56½" and (2) 38½" lengths (*if your measurements are different, cut to fit your quilt top*). Stitch the longer lengths to the left and right sides of the quilt top.
7. Stitch a 3" blue tonal square to each end of the (2) shorter blue dot lengths cut in step 6. Sew these pieced borders to the top and bottom of the quilt top.
8. Layer the completed quilt top with batting and backing and quilt as desired.
9. Trim the batting and backing even with the outer edges of the quilt top. Bind the finished quilt using the 2½" brown snowflakes strips set aside for the binding.

Snow Much Fun

Pieced Quilt

Materials

2¼ yards	Cream Snowmen	5898-44
1½ yards	Green Tonal	5899-66
1½ yards	Blue Dot	5900-77
		<i>(includes binding)</i>
2 yards	Brown Snowflakes	5901-33
1⅝ yards	Snowman Scenes	5902-11
6¼ yards	Blue Snowmen	5898-11
		<i>(for quilt backing)</i>

Cutting Instructions

Please note: all strips are cut across the width of the fabric from selvage edge to selvage edge.

From the cream snowmen, cut:

- (8) 7" strips for the inner border.
- (5) 3½" strips. Recut into (48) 3½" x 3½" squares.

From the green tonal, cut:

- (5) 6½" strips.

From the blue dot, cut:

- (10) 3½" strips.
- (9) 2½" strips for the binding.
- (1) 2" strip. Recut into (20) 2" x 2" squares.

From the brown snowflakes, cut:

- (9) 3½" strips for the outer border.
- (16) 2" strips. Recut into (31) 2" x 18½" sashing pieces.

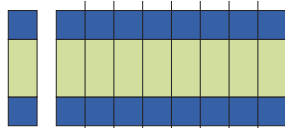
From the snowman scenes, cut:

- (4) 12½" strips. Recut into (12) 12½" x 12½" squares.

Sewing Instructions

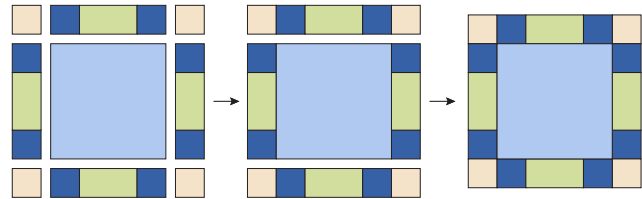
All seams are sewn using ¼" seam allowance with pieces held right sides together and raw edges even.

1. Sewing lengthwise, stitch 3½" blue dot strips to each long side of a 6½" green tonal strip. This strip set should measure 12½" high from raw edge to raw edge. Repeat to make a total of (5) strip sets. From these strip sets, cut a total of (48) 3½" wide segments.



Sewing Instructions (cont.)

2. Arrange (4) strip set segments from step 1, (4) 3½" cream snowmen squares, and (1) 12½" snowman scenes square into (3) rows as shown in the diagram below, noting orientation of the snowman scenes square. Stitch the units into rows and sew the rows together to complete (1) block. Repeat to make a total of (12) blocks.



- Referring to the quilt pictured on the cover, stitch together (3) blocks from step 2 and (4) 2" x 18½" brown snowflakes sashing pieces, alternating the two types of units. Repeat to make a total of (4) block rows.
- Stitch together (4) 2" blue dot squares and (3) 2" x 18½" brown snowflakes sashing pieces, alternating the two types of units. Repeat to make a total of (5) sashing rows.
- To complete the quilt center, sew the block and sashing rows together, alternating the two types of units and noting the orientation of the snowman scenes squares in each block row.
- Trim the selvages from the 7" cream snowmen strips and sew the strips together end to end to make a long 7" strip. From this long strip, cut (2) 80" and (2) 73½" lengths (*if your measurements are different, cut to fit your quilt top*). Stitch the longer lengths to the left and right sides of the quilt top. Sew the shorter lengths to the top and bottom.
- Trim the selvages from the 3½" brown snowflakes strips and sew the strips together end to end to make a long 3½" strip. From this long strip, cut (2) 93" and (2) 79½" lengths (*if your measurements are different, cut to fit your quilt top*). Stitch the longer lengths to the left and right sides of the quilt top. Sew the shorter lengths to the top and bottom.
- Layer the completed quilt top with batting and backing and quilt as desired.
- Trim the batting and backing even with the outer edges of the quilt top and bind using the 2½" blue dot strips.